

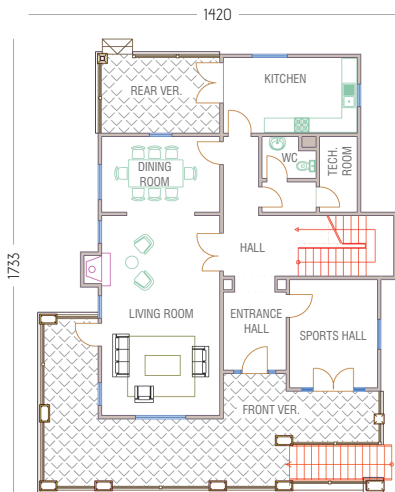
ZÜMRÜT EV2345



It is quick!

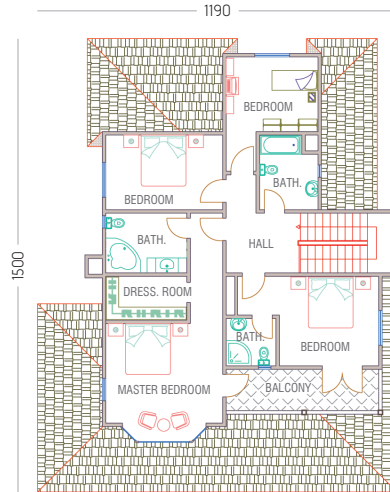
Building up process is very quick and independent from weather conditions in steel construction, as concrete is not needed except for the foundation and subbasement. This allows a decrease in the need for capital and in the construction costs. Assembling of a 200 m2 house can be completed in only 7 days.

GROUND FLOOR PLAN



Living Room	: 37 m ²
Entrance Hall	: 8 m ²
Hall - Stairs	: 20 m ²
Dining Room	: 14 m ²
Sports Room	: 15 m ²
Technical Room	: 5 m ²
Kitchen	: 16 m ²
Wc-Hall	: 5 m ²
Net Total	: 120 m²
Gross Total	: 136 m²
Front Veranda	: 56 m ²
Rear Veranda	: 15 m ²
Grand Total	: 207 m²

UPPER FLOOR PLAN



Master Bedroom	: 26 m ²
Bedroom	: 14 m ²
Bedroom	: 13 m ²
Bedroom	: 17 m ²
Parent Bathroom	: 8 m ²
Dressing Room	: 6 m ²
Bathroom	: 7 m ²
Bathroom	: 4 m ²
Hall - Stairs	: 18 m ²
Net Total	: 113 m²
Gross Total	: 127 m²
Hall - Stairs	: 11 m ²
Grand Total	: 138 m²



FRONT SIDE



FRONT LEFT SIDE