

KUVARS EV2369



Isolation of high value.

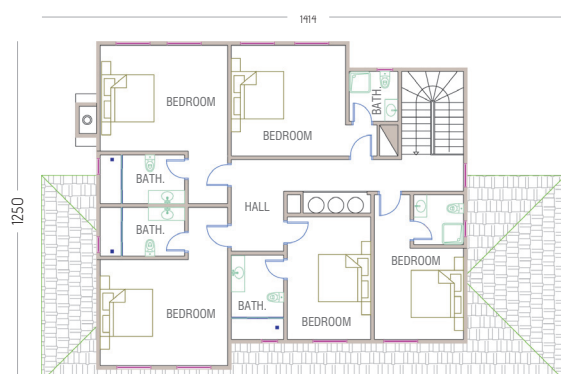
Thermal insulation characteristics of your Fuga Steel House are calculated according to the location and the most suitable insulation materials are used. Therefore it provides the comfort of a warm atmosphere in winter and cool in the summer. It also helps save from heating and cooling costs to a great extent.

GROUND FLOOR PLAN



Living Room	: 92 m ²
Entrance Hall	: 8 m ²
Technical Room	: 6 m ²
Kitchen	: 25 m ²
Stairs To	: 8 m ²
Cloakroom	: 4 m ²
Net Total	: 148 m²
Gross Total	: 164 m²
Rear Veranda	: 41 m ²
Grand Total	: 205 m²

UPPER FLOOR PLAN



Bedroom	: 23 m ²
Bedroom	: 23 m ²
Bedroom	: 18 m ²
Bedroom	: 15 m ²
Bedroom	: 21 m ²
Bathroom	: 6 m ²
Bathroom	: 6 m ²
Bathroom	: 7 m ²
Bathroom	: 4 m ²
Bathroom	: 4 m ²
Hall-Ladder	: 23 m ²
Net Total	: 113 m²
Gross Total	: 127 m²
Grand Total	: 138 m²



FRONT SIDE



FRONT LEFT SIDE