

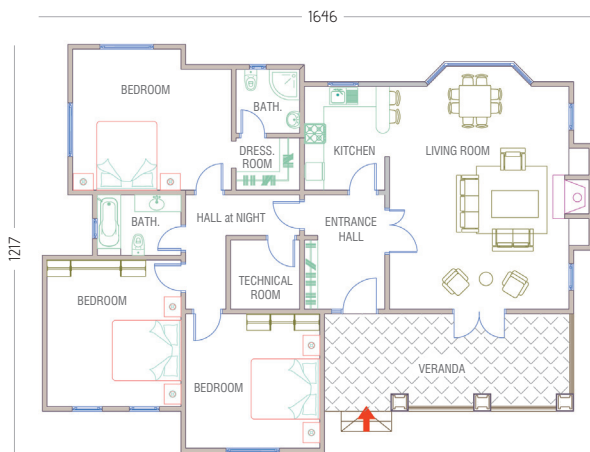
TURKUAZ EV1164



It is
environmentally
friendly!

Steel is a durable and reusable material. Materials gathered from the disassembly of steel buildings are recycled. A building's skeleton made of light-gauge steel can be recycled from 7-8 old cars.

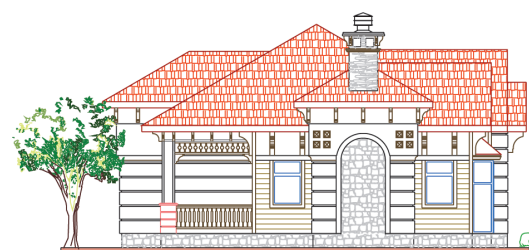
FLOOR PLAN



Living Room	:	39 m ²
Entrance Hall	:	8 m ²
Bedroom	:	17 m ²
Bedroom	:	20 m ²
Bedroom	:	16 m ²
Technical Room	:	4 m ²
Kitchen	:	8 m ²
Bathroom	:	5 m ²
Parent Bathroom	:	3 m ²
Dressing Room	:	3 m ²
Hall at Night	:	7 m ²
Net Total	:	130 m²
Gross Total	:	143 m²
Veranda	:	21 m²
Grand Total	:	164 m²



FRONT SIDE



FRONT LEFT SIDE