

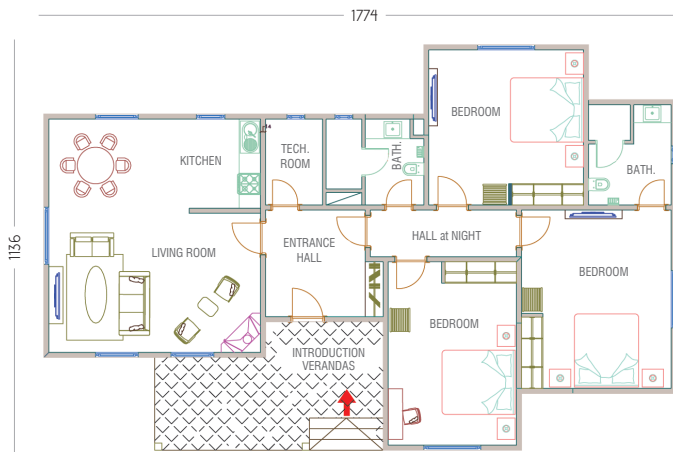
# FIRUZE EV1162



This system is also used in buildings of different purposes.

This system is also used in various fields. (Houses with different models and areas, small-scale low-rise commercial buildings and industrial structures -chicken farms, etc.-) In addition, Fuga Steel System for multi-story buildings, The walls of the inner and outer sections, serial production roof cutter, joist production, serial production of bathroom, wc, etc. can easily be used in the production of cabinet.

## FLOOR PLAN



Living Room	: 33 m <sup>2</sup>
Entrance Hall	: 9 m <sup>2</sup>
Master Bedroom	: 21 m <sup>2</sup>
Bedroom	: 19 m <sup>2</sup>
Bedroom	: 18 m <sup>2</sup>
Technical Room	: 4 m <sup>2</sup>
Kitchen	: 5 m <sup>2</sup>
Bathroom	: 6 m <sup>2</sup>
Parent Bathroom	: 6 m <sup>2</sup>
Hall at Night	: 7 m <sup>2</sup>
<b>Net Total</b>	<b>: 126 m<sup>2</sup></b>
<b>Gross Total</b>	<b>: 142 m<sup>2</sup></b>
Veranda	: 20 m <sup>2</sup>
<b>Grand Total</b>	<b>: 162 m<sup>2</sup></b>



FRONT SIDE



FRONT LEFT SIDE