

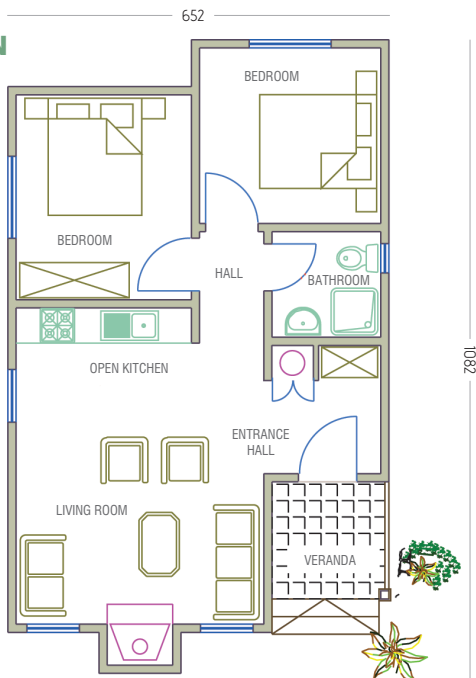
MERCAN EV1061



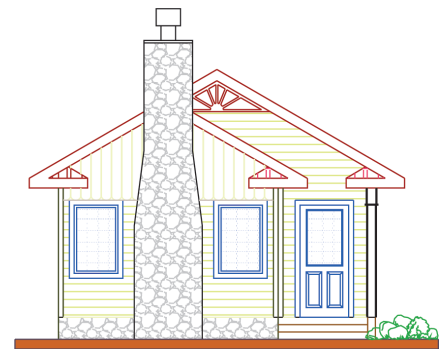
Steel Building System is safer than reinforced concrete!

As steel construction building system is lighter than other systems, it is exposed to less earthquake force. Steel building elements aren't brittle like reinforced concrete, but act in a ductile manner; they absorb the earthquake force without collapsing. In steel buildings it is very unlikely for floors to collapse one on the top of the other and cause any casualties.

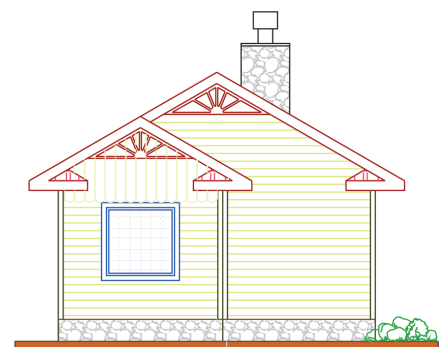
FLOOR PLAN



Living Room - Kitchen :	22 m ²
Entrance Hall :	4 m ²
Bedroom :	9 m ²
Yatak Odası :	11 m ²
Bathroom :	3 m ²
Hall at Night :	2 m ²
Net Total :	51 m²
Gross Total :	57 m²
Veranda :	4 m ²
Grand Total :	61 m²



FRONT SIDE



REAR SIDE